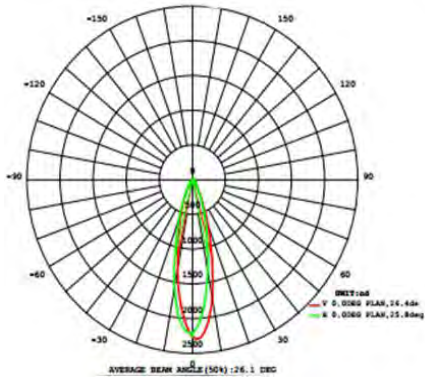
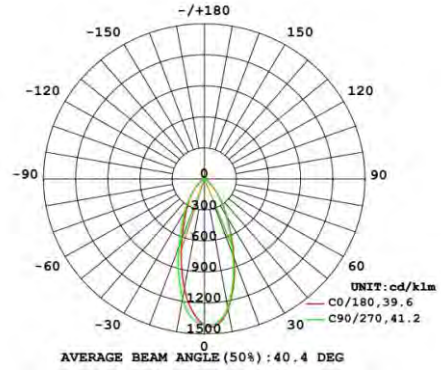


1.4 Intensity Distribution Diagram of Lens

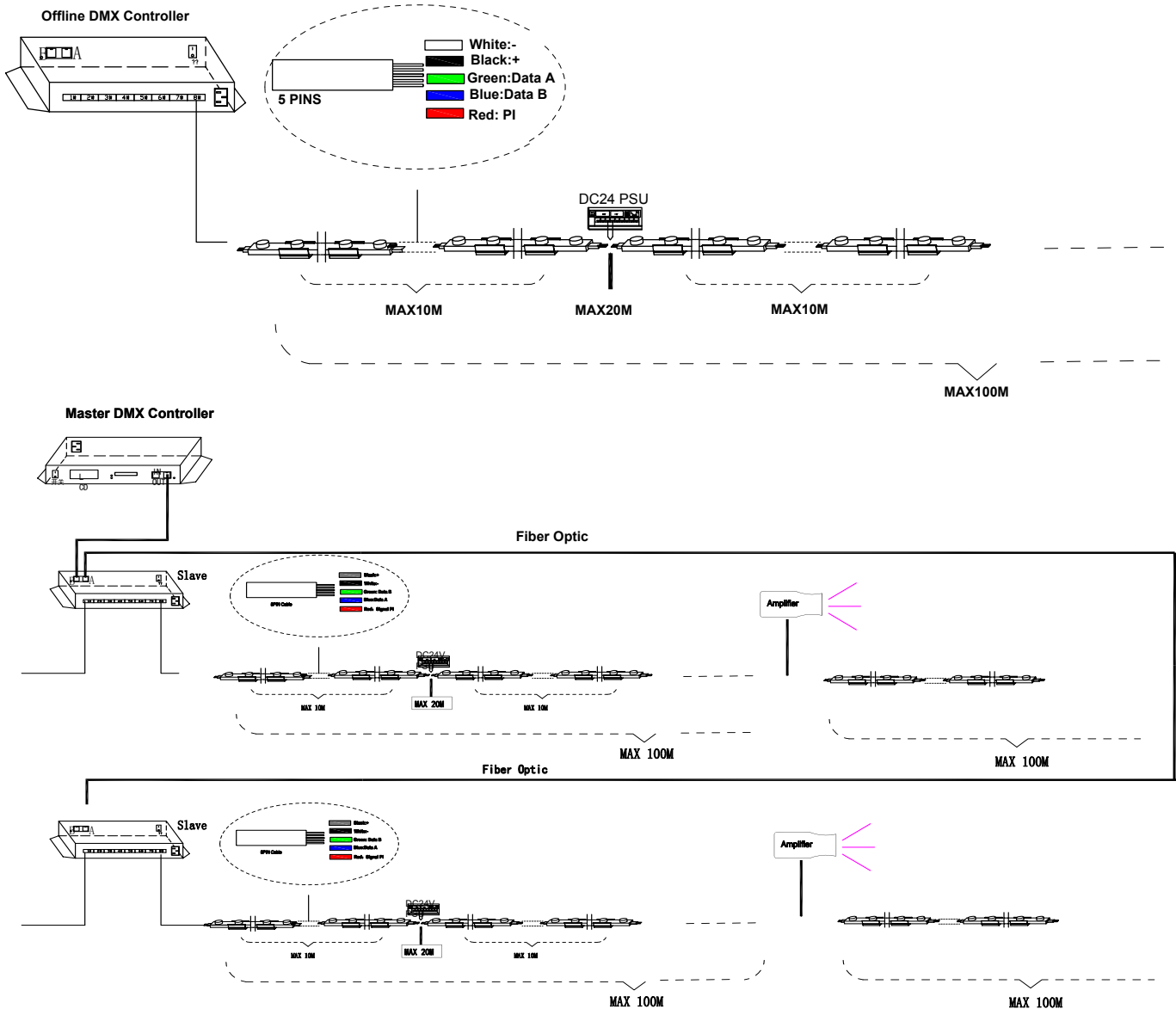
60 degree smooth surface lens



45 degree forested surface lens

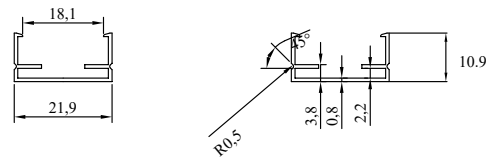
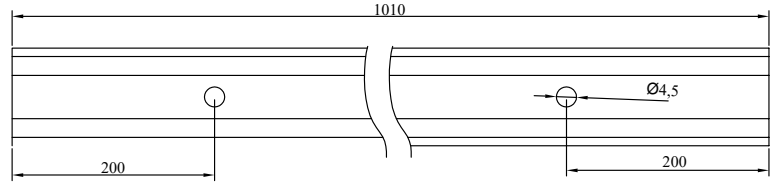
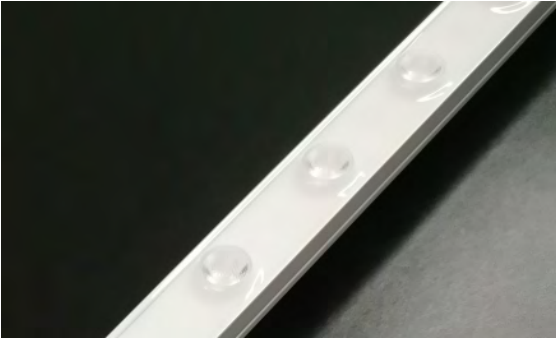


1.5 DMX512 Wiring Diagram



2. Mounting Profile

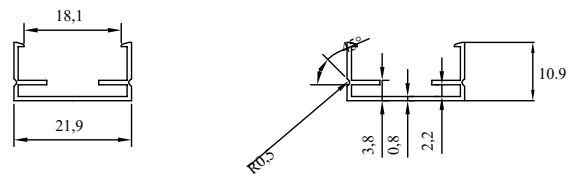
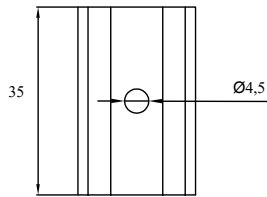
2.1 Aluminum Profile Chanel



Any length available less than 3 meters

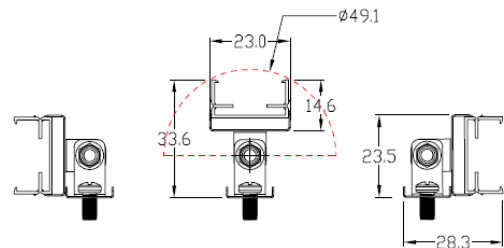
Note: Unless otherwise stated, the tolerance of the profile is $\pm 0.5\text{mm}$.

2.2 5" x 7" Jdg



Note: Unless otherwise stated, the tolerance of the profile is $\pm 0.5\text{mm}$.

2.3 Rotatable Brackets



Note: Unless otherwise stated, the tolerance of the profile is $\pm 0.5\text{mm}$.